

Materials

- Yarn** 375 (600, 1080) yards of [Red Heart Super Saver in White](#) (Color A)
375 (600, 1080) yards of [Red Heart Super Saver in Monet](#) (Color B)
- Gauge** 23 sts x 26 rows = 4" x 4"
in Stockinette stitch (DK)
- Needles** [US #9/5.50 mm \(40" circular recommended\)](#)
- Notions** [finishing needle](#)
[stitch markers \(optional\)](#)

Finished Sizes

- baby - 30" x 36"
lapghan - 36" x 48"
throw - 52" x 60"

Abbreviations

- BO - bind off
CO - cast on
k - knit
pwise - purlwise, as if to purl
sl - slip
st(s) - stitch(es)
wyib - with yarn in back
wyif - with yarn in front
WS - wrong side

Gauge

- 13 sts x 27 rows = 4" x 4"
in garter stitch

Pattern Notes

- If you are new to mosaic knitting, take a moment to review our [Introduction to Mosaic Knitting](#), which includes written instructions, charts, and videos for two practice stitches.
- If substituting yarn, be sure to pick two highly contrasting colorways.
- Mosaic stitches are easier to see from a distance. If you are not sure if you are working a pattern correctly, step back and take a look!
- Instructions will be provided for multiple sizes as follows: S (M, L)
Slipped stitches on odd (RS) rows should be slipped pwise wyib.
Slipped stitches on even (WS) rows should be slipped pwise wyif.

Additional Resources

[Add to Your Ravelry Queue](#)

[Contact the Designer](#)

[Join our Facebook Community](#)



The Spring Stitch Sampler is a blanket that incorporates four different mosaic (slipped) stitch patterns. It was originally released in installments through the month of May 2021.

Setup

Using Color A, CO 121 (147, 200) sts and knit 2 rows.
Begin Pyramid Stitch.

Part 1: Pyramid Stitch

Row 1 (Color B) – k11 (k10, k8), *sl 1, k13*
until 12 (11, 10) sts remain, sl 1, k to end

For Row 2 and all even (WS) rows, knit all stitches that were knit on the previous row. Slip all stitches that were slipped on the previous row.

Row 3 (Color A) – k5 (k4, k2), *(sl1, k1) twice,
sl1, k3, (sl1, k1) 3 times* until 4 (3, 2) sts
remain, k to end

Row 5 (Color B) – k10 (k9, k7), *sl 1, k1, sl 1,
k11* ending the last repeat with k10 (9, 8)

Row 7 (Color A) – k5 (k4, k2), *sl 1, k1, sl 1,
k7, (sl 1, k1) twice* until 4 (3, 2) sts remain, k
to end

Row 9 (Color B) – k8 (k7, k5), *(sl 1, k1) 3
times, sl 1, k7* ending the last repeat with k8
(k7, k6)

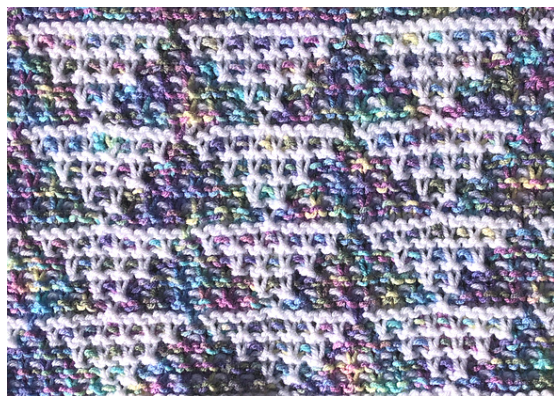
Row 11 (Color A) – k5 (k4, k2), *sl 1, k11, sl 1,
k1* until 4 (3, 2) sts remain, k to end

Row 13 (Color B) – k6 (k5, k3), *(sl 1, k1) 5
times, sl 1, k3* until 3 (2, 1) sts remain, k to
end

Row 15 (Color A) – k4 (k3, k1), *sl 1, k13*
until 5 (4, 3) sts remain, sl 1, k to end

Be sure to work Row 16 as Row 2!

Repeat these 16 rows until work measures 9"
(12", 15") from cast-on edge, ending with Row
16.



About This Stitch

Pyramid Stitch is worked in multiples
of 14 + 3 stitches over 16 rows.

Resources

[Video Walkthrough](#)

Setup

With Color B, knit 2 rows. Begin Dotted Wave Stitch.

Part 2: Dotted Wave Stitch

Rows 1, 13, 29 (Color A) – k7 (k5, k5), sl 1, *k5, sl 1* until 5 (3, 2) sts remain, k to end

For Row 2 and all even (WS) rows, knit all stitches that were knit on the previous row. Slip all stitches that were slipped on the previous row.

Rows 3, 15, 27, 39 (Color B) – k4 (k2, k2), *sl 1, k3, sl1, k1* until 3 (1, 0) sts remain, k to end

Row 5, 17, 25, 37 (Color A) – k5 (k3, k3), *sl 1, k5* until 8 (6, 5) sts remain, sl 1, k to end

Rows 7, 19, 23, 35 (Color B) – k6 (k4, k4), *sl 1, k1, sl 1, k3* until 7 (5, 4) sts remain, sl 1, k1, sl 1, k to end

Rows 9, 21, 33 (Color A) – k3 (k1, k1), *sl 1, k5* until 4 (2, 1) sts remain, k to end

Rows 11, 31 (Color B) – k4 (k2, k2), *sl 1, k1, sl 1, k3* until 3 (1, 0) sts remain, k to end

Be sure to work Row 40 as Row 2!

Continue working until work measures 27" (36", 45") from cast-on edge, ending with Row 20.



About This Stitch

Dotted Wave Stitch is worked in multiples of 6 + 2 stitches over 40 rows.

Resources

[Video Walkthrough](#)

Setup

With Color A, knit 2 rows. Begin Greek Cross Stitch.

Part 3: Greek Cross Stitch

Row 1 (Color B) – k5 (k4, k2), *sl 1, k1, (sl 1, k3) twice, (sl 1, k1) twice* until 4 (3, 2) sts remain, k to end

For Row 2 and all even (WS) rows, knit all stitches that were knit on the previous row. Slip all stitches that were slipped on the previous row.

Rows 3 and 19 (Color A) – k8 (k7, k5), *sl 1, k5, sl 1, k7* ending the last repeat with 8 (7, 6) sts

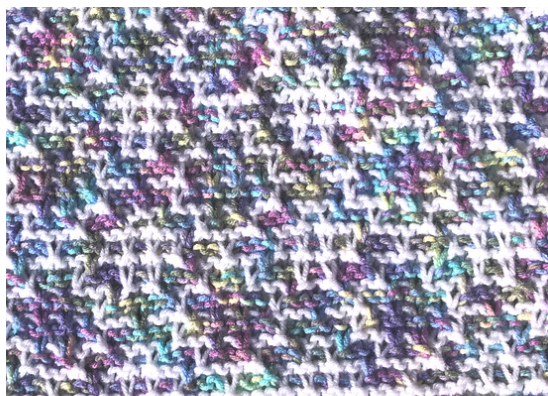
Rows 5 and 17 (Color B) – k5 (k4, k2), *(sl 1, k3) 3 times, sl 1, k1* until 4 (3, 2) sts remain, k to end

Rows 7 and 15 (Color A) – k6 (k5, k3), *sl 1, k3, sl 1, k1, (sl 1, k3) twice* until 3 (2, 1) sts remain, k to end

Rows 9 and 13 (Color B) – k7 (k6, k4), *sl 1, k7, sl 1, k5* until 2 (1, 0) sts remain, k to end

Row 11 (Color A) – k4 (k3, k1), *sl 1, k3, (sl 1, k1) 3 times, sl 1, k3* until 5 (4, 3) sts remain, sl 1, k to end

Be sure to work Row 20 as Row 2!



About This Stitch

Greek Cross Stitch is worked in multiples of 14 + 3 stitches over 20 rows.

Resources

[Video Walkthrough](#)

Setup

With Color B, knit 2 rows. Begin Key & Basket Stitch.

Part 4: Key & Basket Stitch

Row 1 (Color A) – k4, (k1, k3), *(k1, sl 1, k3, sl 1) twice, k3, sl 1* until 5 (2, 5) sts remain, k to end

For Row 2 and all even (WS) rows, knit all stitches that were knit on the previous row. Slip all stitches that were slipped on the previous row.

Row 3 (Color B) – k4 (k1, k3), *sl 1, k3* until 5 (2, 5) sts remain, sl 1, k to end

Row 5 (Color A) – k7 (k4, k6), *sl 1, k1, (sl 1, k3) twice, sl 1, k5* ending last repeat with k7 (k4, k7)

Row 7 (Color B) – k5 (k2, k4), *sl 2, k3, (sl 1, k3) twice, sl 2, k1* until 4 (1, 4) sts remain, k to end

Row 9 (Color A) – k7 (k4, k6), *(sl 1, k3) twice, sl 1, k1, sl 1, k5* ending last repeat with k7 (k4, k7)

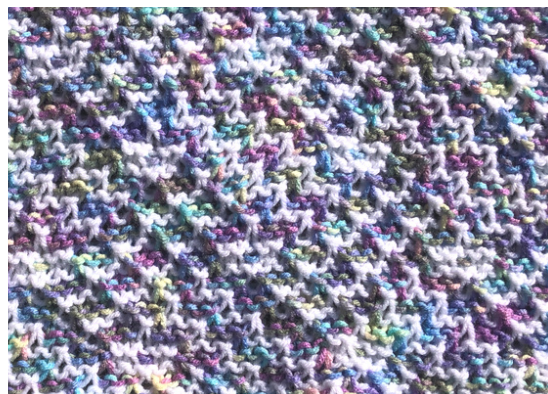
Row 11 (Color B) – k4 (k1, k3), *sl 1, k3* until 5 (2, 5) sts remain, sl 1, k to end

Row 13 (Color A) – k5 (k2, k4), *(sl 1, k3) twice, sl 1, k1, sl 1, k3, sl 1, k1* until 4 (1, 4) sts remain, k to end

Rows 15 and 31 (Color B) – k6 (k3, k5), *sl 1, k3* until 3 (0,3) sts remain, k to end

Row 17 (Color A) – k5 (k2, k4) *(sl 1, k1, sl 1, k3) twice, sl 1, k3* until 4 (1, 4) sts remain, k to end

Row 21 (Color A) – k7 (k4, k6), *sl 1, k1, sl 1, k5, (sl 1, k3) twice* ending last repeat with k5 (k2, k5)



About This Stitch

Key & Basket Stitch is worked in multiples of 16 + 3 stitches over 32 rows.

Resources

[Video Walkthrough](#)

Row 23 (Color B) – k6 (k3, k5), *sl 1, k3, sl 2, k1, sl 2, k3, sl 1, k3* until 3 (0, 3) sts remain, k to end

Row 25 (Color A) – k5 (k2, k4), *sl 1, k3, sl 1, k5, sl 1, k1, sl 1, k3* until 4 (1, 4) sts remain, k to end

Row 29 (Color A) – k7 (k4, k6), *(sl 1, k3, sl 1, k1) twice, sl 1, k3* ending last repeat with k5 (k2, k5)

Be sure to work Row 32 as Row 2!

Continue working until work measures 36" (48", 60") from cast-on edge, ending with Row 16 or Row 32.

Finishing

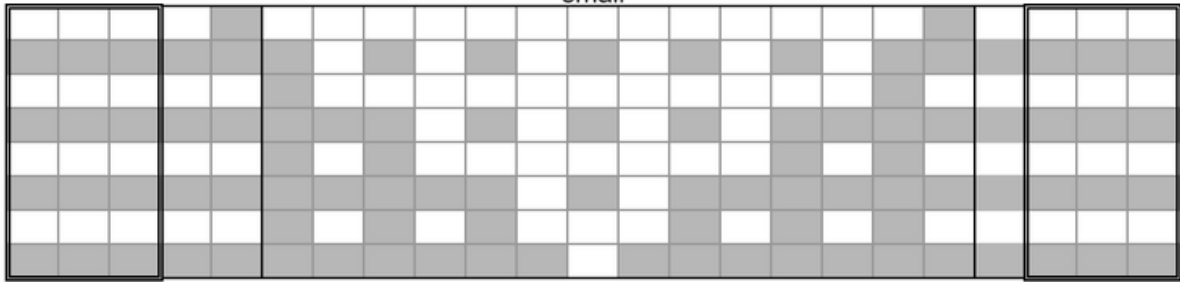
With Color A, knit one row.

BO all sts kwise on the next row.

Weave in ends and block lightly if desired.

SPRING STITCH SAMPLER

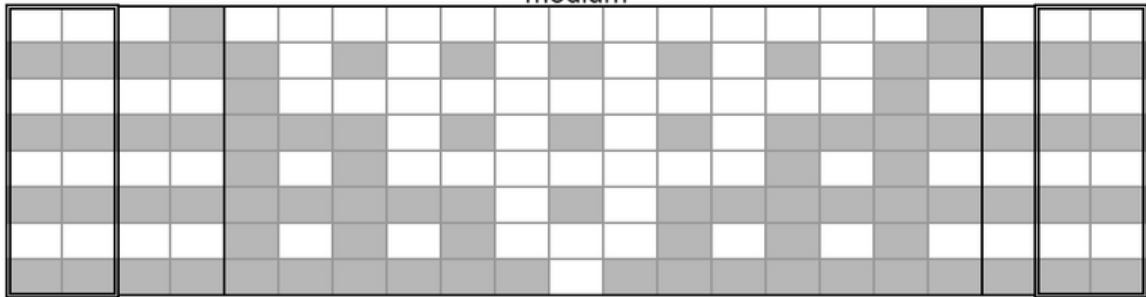
Pyramid Stitch small



- 15
- 13
- 11
- 9
- 7
- 5
- 3
- 1

border stitches incorporated into original pattern
 additional border stitches

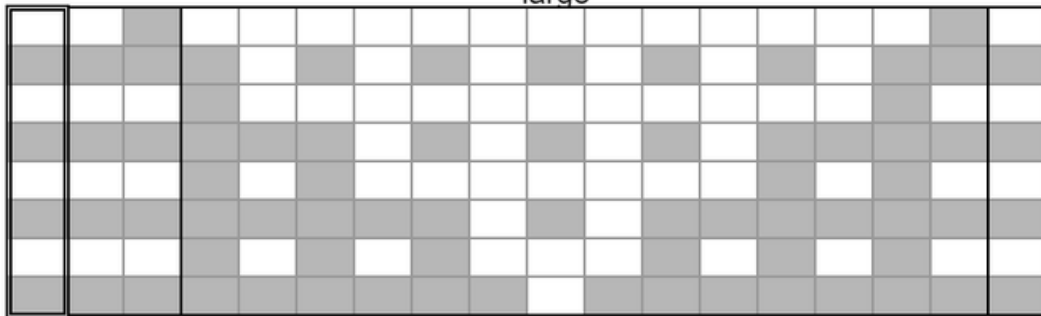
Pyramid Stitch medium



- 15
- 13
- 11
- 9
- 7
- 5
- 3
- 1

border stitches incorporated into original pattern
 additional border stitches

Pyramid Stitch large

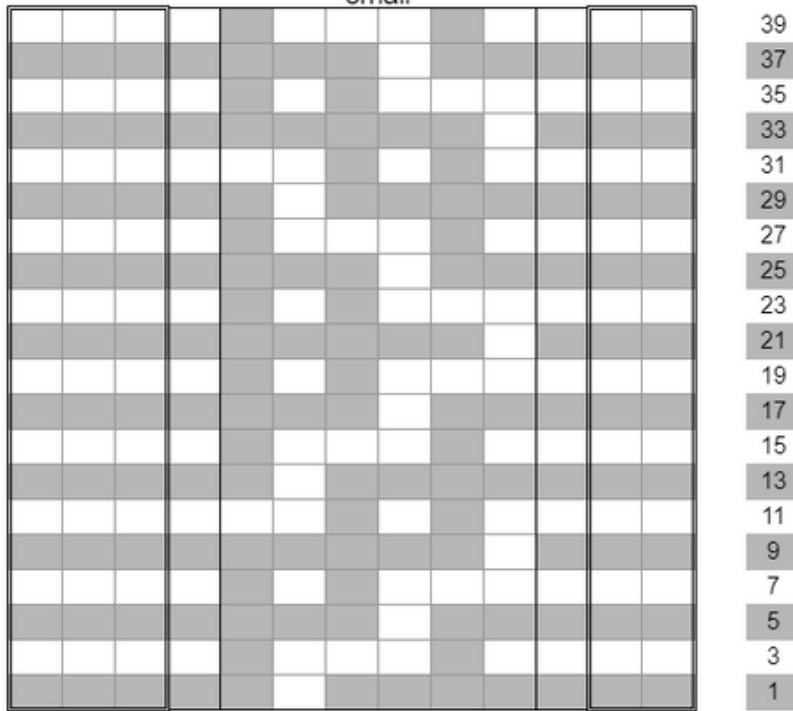




- 15
- 13
- 11
- 9
- 7
- 5
- 3
- 1

border stitches incorporated into original pattern
 additional border stitches

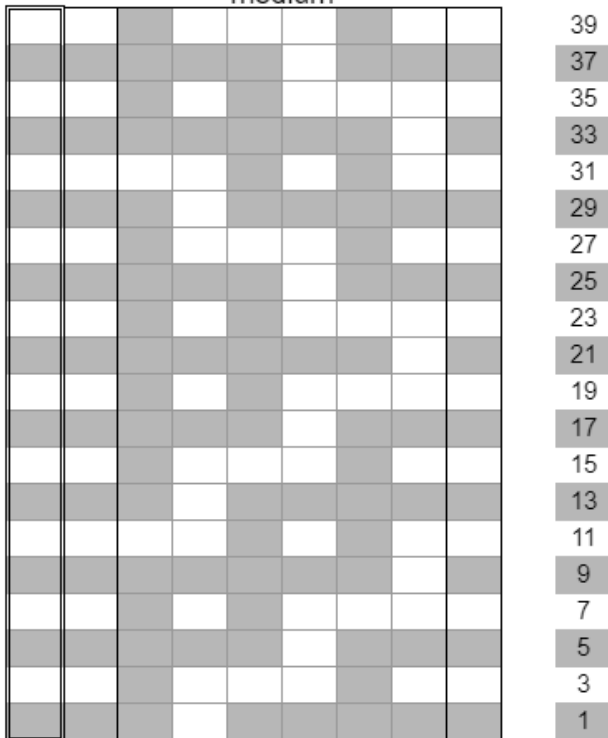
SPRING STITCH SAMPLER



Dotted Wave
small



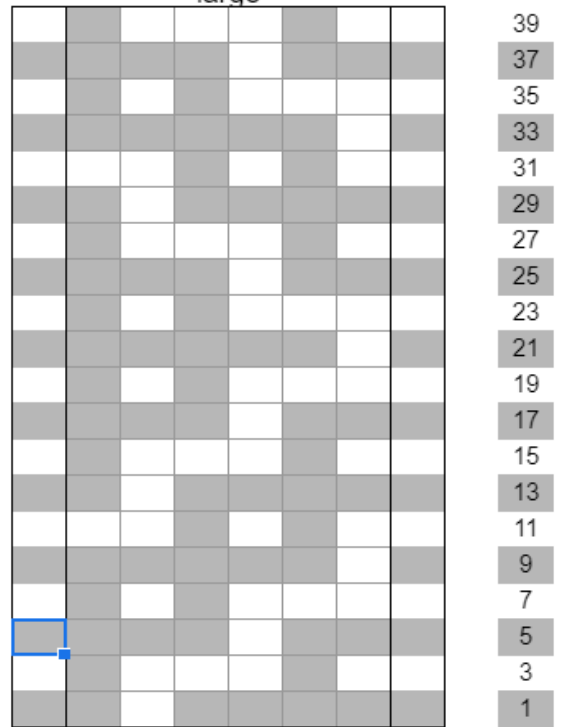
-  border stitches incorporated into original pattern
-  additional border stitches

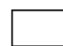
Dotted Wave
medium



-  border stitches incorporated into original pattern
-  additional border stitches

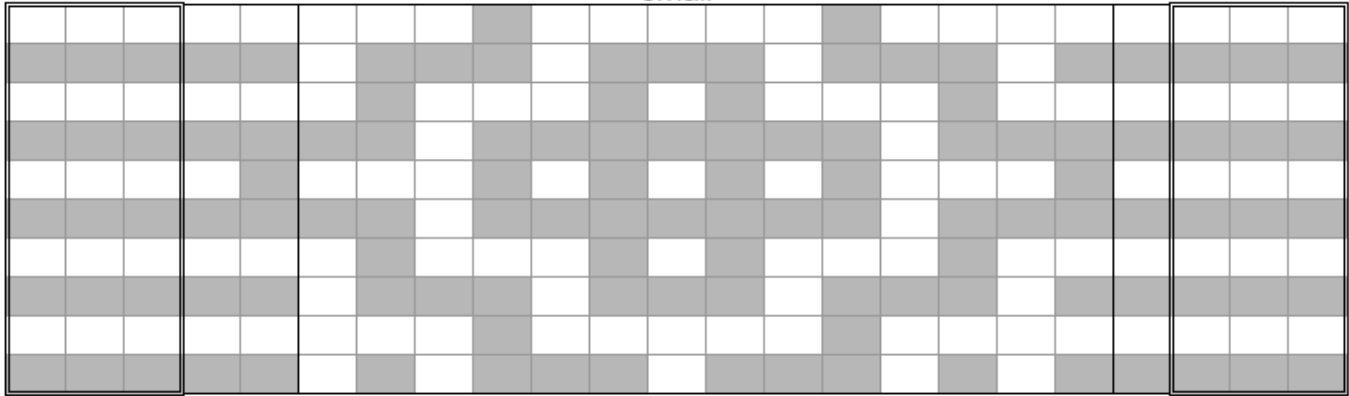
Dotted Wave
large



-  border stitches incorporated into original pattern
- no additional border stitches were needed for this size

Greek Cross Stitch

small



19
17
15
13
11
9
7
5
3
1



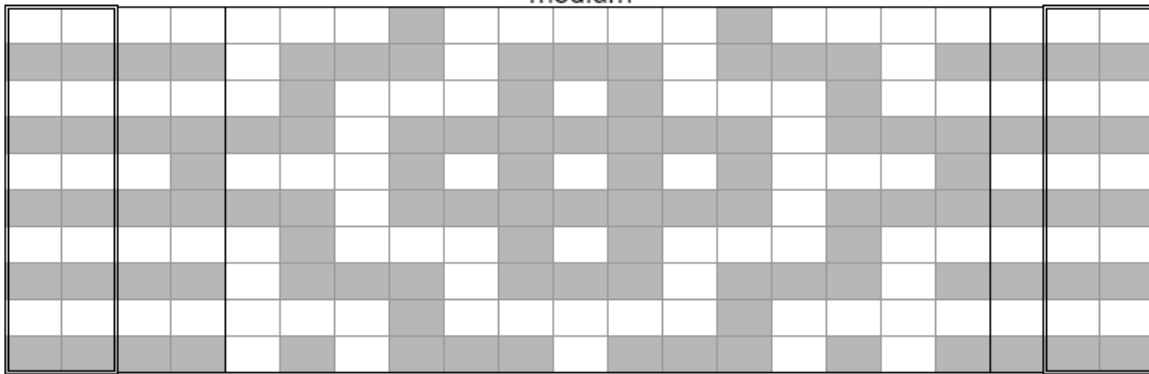
border stitches incorporated into original pattern



additional border stitches

Greek Cross Stitch

medium



19
17
15
13
11
9
7
5
3
1



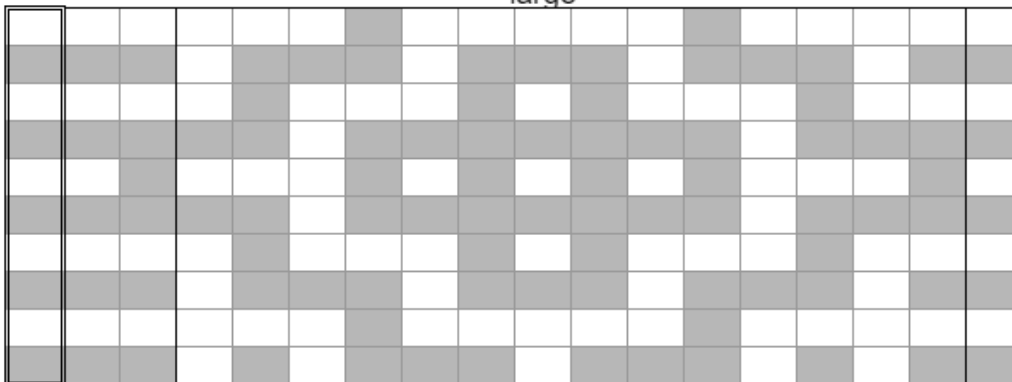
border stitches incorporated into original pattern



additional border stitches

Greek Cross Stitch

large



19
17
15
13
11
9
7
5
3
1



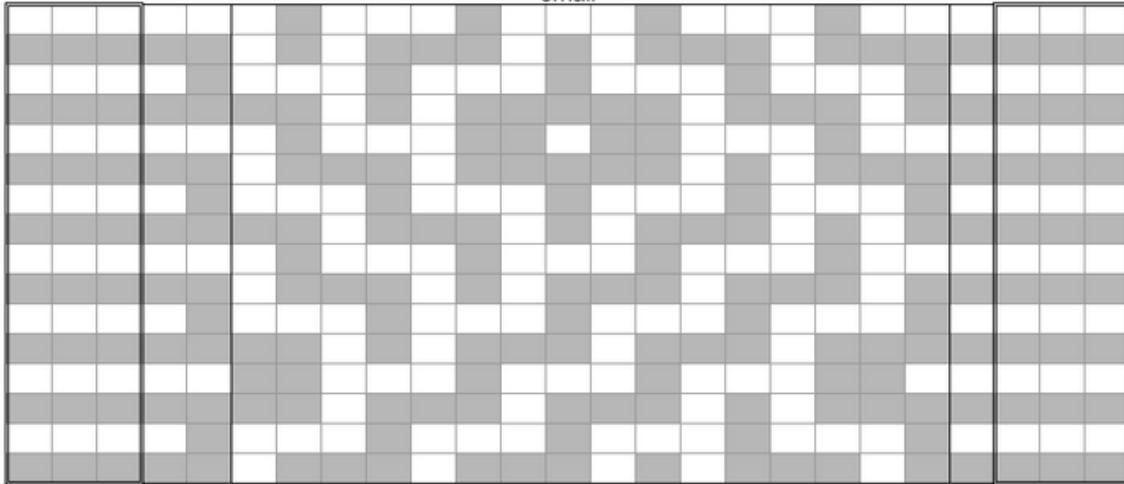
border stitches incorporated into original pattern



additional border stitches

SPRING STITCH SAMPLER

Key & Basket Stitch small



31
29
27
25
23
21
19
17
15
13
11
9
7
5
3
1

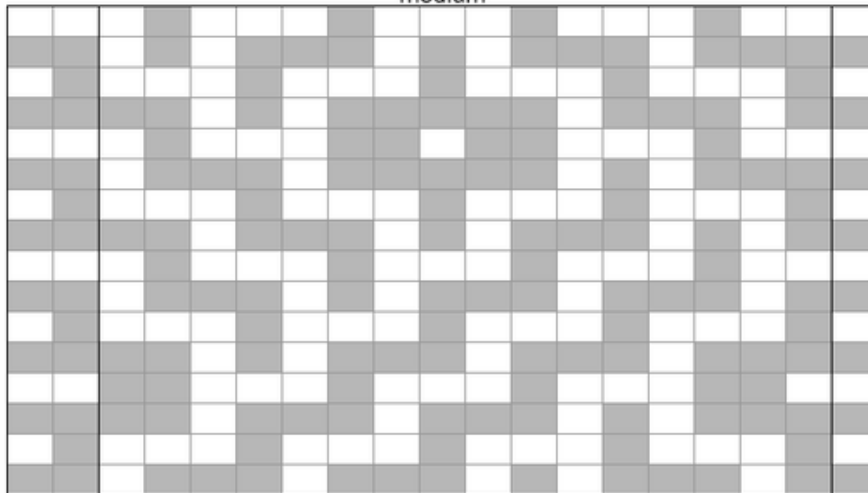


border stitches incorporated into original pattern



additional border stitches

Key & Basket Stitch medium

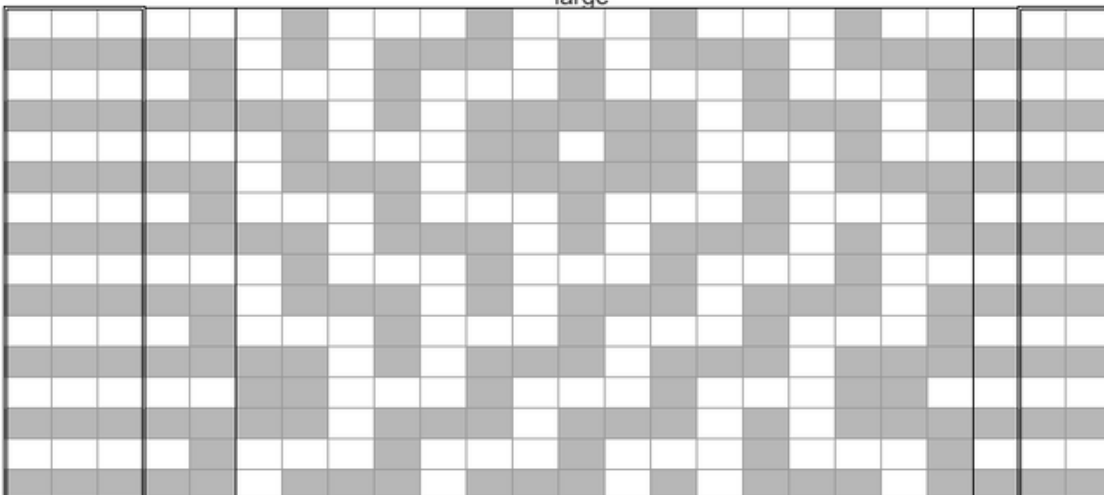


31
29
27
25
23
21
19
17
15
13
11
9
7
5
3
1



border stitches incorporated into original pattern

Key & Basket Stitch large



31
29
27
25
23
21
19
17
15
13
11
9
7
5
3
1



border stitches incorporated into original pattern



additional border stitches