

POLYHEDRON COWL

knitting pattern by Holly Beemer

at yarn's length



Polyhedron is a double-knit cowl that is completely reversible. Like a true polyhedron, it's a three-dimensional shape made of triangles.

MATERIALS

YARN

Lion Brand Shawl in a Ball:

1 skein of *Lotus Blossom* (Color A)

1 skein of *Opal* (Color B)

NEEDLES

US #8/5.00 mm (24" circular)

NOTIONS

finishing needle

stitch markers (optional, but helpful)

SIZING

28" circumference, 8" tall

GAUGE

20 sts x 28 rows = 4" x 4"
in double-knit Stockinette stitch

Matching gauge is not essential.

PATTERN

Polyhedron is double-knit from bottom to top. It is worked in the round.

ABBREVIATIONS

BO - bind off

CO - cast on

k - knit

p - purl

st(s) - stitch(es)

POLYHEDRON COWL

SETUP

With Color A, CO 192 sts for double knitting in the round. [96 sts per side]

BODY

Each stitch in the pattern represents a knit stitch in the indicated color and a purl stitch in the other color on the reverse side of the fabric.

Working in the round, use Color A (*Opal*) and **Color B** (*Lotus Blossom*) to work the stitches as follows. Work each set of instructions twice per round.

Round 1 - **k15**, k8, **k1**, k8, **k31**, k8, **k1**, k8, **k16**

Round 2 - **k2**, k13, **k1**, k7, **k1**, k7, **k1**, k13, **k3**

Round 3 - **k1**, k1, **k2**, k11, **k1**, k7, **k1**, k7, **k1**, k11, **k2**, k1, **k2**

Round 4 - k1, **k1**, k2, **k2**, k10, **k1**, k6, **k1**, k6, **k1**, k10, **k2**, k2, **k1**, k1, **k1**

Round 5 - k2, **k1**, k3, **k2**, k8, **k1**, k6, **k1**, k6, **k1**, k8, **k2**, k3, **k1**, k2, **k1**

Round 6 - k2, **k1**, k5, **k1**, k8, **k1**, k5, **k1**, k5, **k1**, k8, **k1**, k5, **k1**, k2, **k1**

Round 7 - k3, **k1**, k5, **k2**, k7, **k1**, k4, **k1**, k4, **k1**, k7, **k2**, k5, **k1**, k2, **k1**

Round 8 - k4, **k1**, k6, **k2**, k5, **k1**, k4, **k1**, k4, **k1**, k5, **k2**, k6, **k1**, k4, **k1**

Round 9 - k4, **k1**, k8, **k1**, k5, **k1**, k3, **k1**, k3, **k1**, k5, **k1**, k8, **k1**, k4, **k1**

Round 10 - k5, **k1**, k8, **k2**, k4, **k1**, k2, **k1**, k2, **k1**, k4, **k2**, k8, **k1**, k5, **k1**

Round 11 - k6, **k1**, k9, **k2**, k2, **k1**, k2, **k1**, k2, **k1**, k2, **k2**, k9, **k1**, k6, **k1**

Round 12 - k6, **k1**, k11, **k2**, k1, **k1**, k1, **k1**, k1, **k1**, k1, **k2**, k11, k1, k6, **k1**

Round 13 - k7, **k1**, k12, k7, k12, **k1**, k7, **k1**

Round 14 - k7, **k1**, k14, **k3**, k14, **k1**, k7, **k1**

Round 15 - k8, **k31**, k8, **k1**

Round 16 - work as Round 14

Round 17 - work as Round 13

Round 18 - work as Round 12

Round 19 - work as Round 11

Round 20 - work as Round 10

Round 21 - work as Round 9

Round 22 - work as Round 8

Round 23 - work as Round 7

Round 24 - work as Round 6

(continued on next page)

BODY (CONT.)

Round 25 - work as Round 5

Round 26 - work as Round 4

Round 27 - work as Round 3

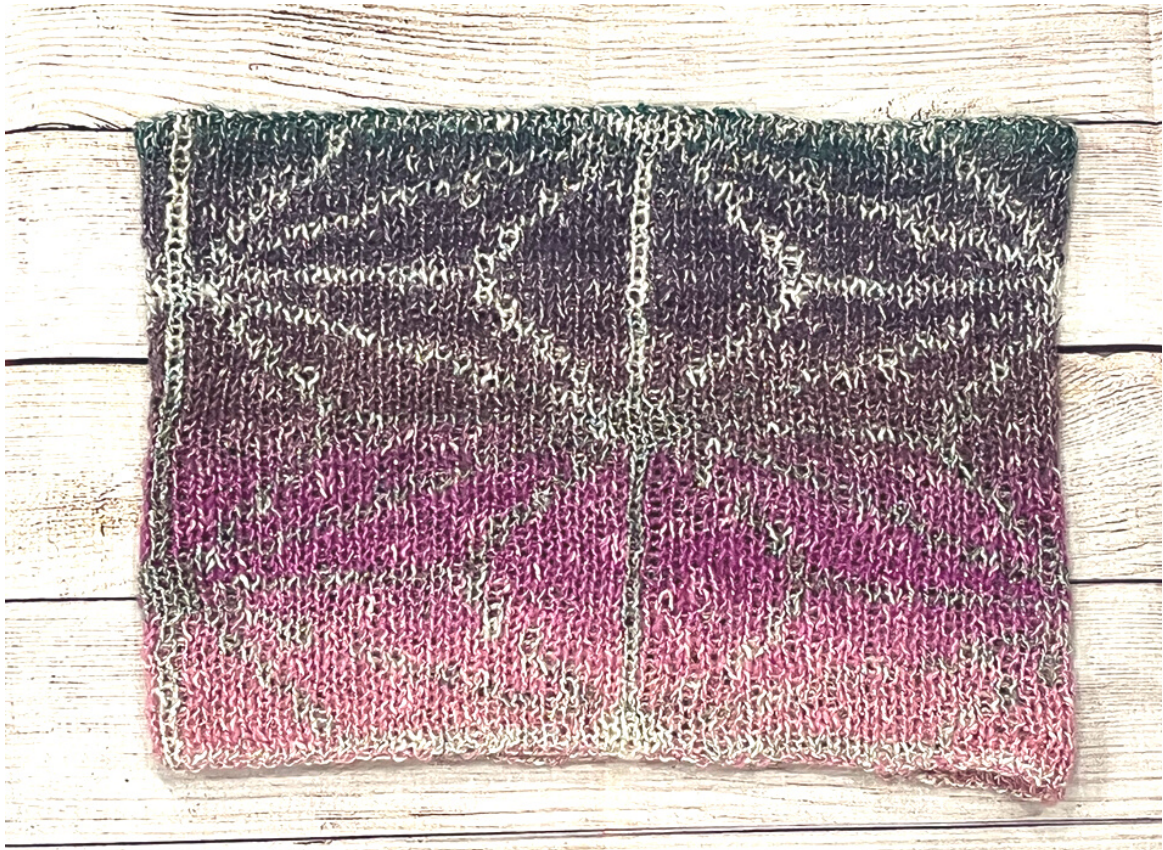
Round 28 - work as Round 2

Repeat Rounds 1 to 28 once (56 rounds total).

FINISHING

Work Round 1 once more.

BO all sts. Weave in ends. Block lightly if desired.



Additional Resources

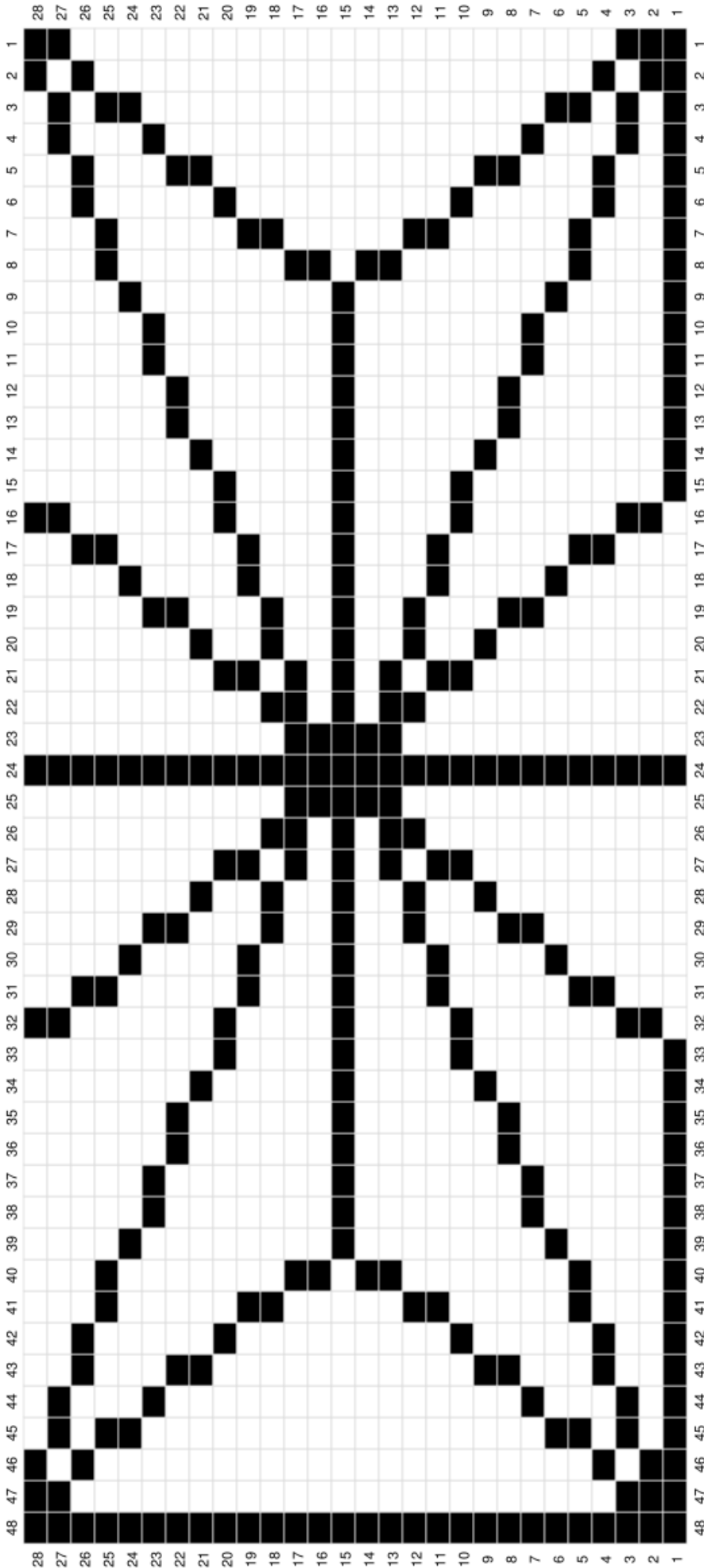
[Add to Your Ravelry Queue](#)

[Contact the Designer](#)

Find Us on Social Media

[Facebook](#) | [Instagram](#) | [Pinterest](#) | [Ravelry](#) | [Twitter](#) | [YouTube](#)

POLYHEDRON COWL



Each row of the chart must be worked twice on each round of knitting.

Each stitch on the chart represents a knit stitch in the indicated color and a purl stitch in the other color on the reverse side of the fabric.

Light boxes represent *Opal* and dark boxes represent *Lotus Blossom*.