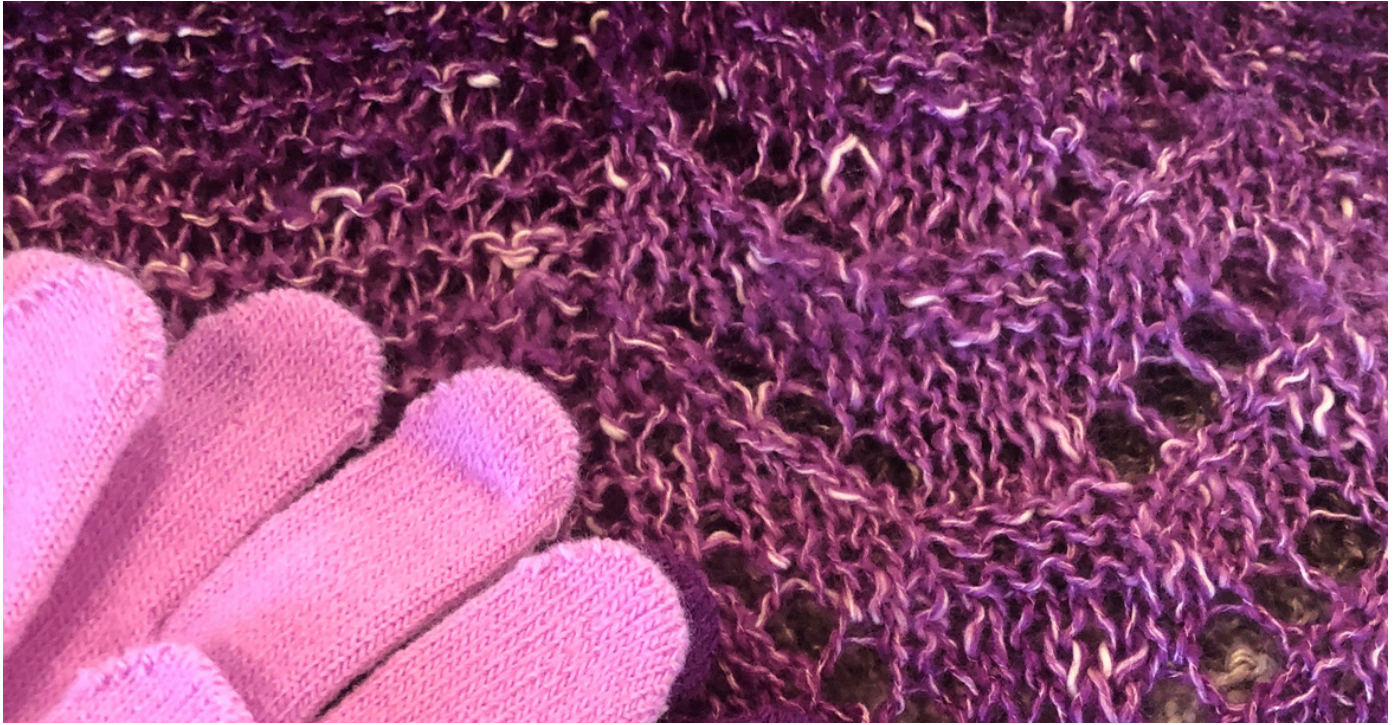


MULBERRY SHAWL

A Reversible Lace Shawl Knitting Pattern by Holly Beemer

at yarn's length



SIZING

The shawl is 60" wide and 30" long from top to tip.

MATERIALS

YARN
475yd (1 ball) of [Lion Brand Shawl in a Ball](#) yarn in *Mindful Mauve*

NEEDLES
[US #10/6.00 mm](#) dpn

NOTIONS
[finishing needle](#)
[stitch markers](#)

GAUGE

19 sts x 28 rows = 4" x 4"
in Stockinette stitch

This shawl showcases the beauty of the ombre yarn while playing with a bit of lacework down the center for interest. It knits up easily and quickly and is reversible!

PATTERN

The shawl is knit back and forth from the bottom (center tip) up.

ABBREVIATIONS

BO - bind off
CO - cast on
k - knit
k2tog - knit 2 stitches together; single right-leaning decrease
m - marker
p - purl
PM - place marker
sm - slip marker
ssk - slip 2 stitches knitwise, knit these 2 stitches together through back loops; single left-leaning decrease
st(s) - stitch(es)
yo - yarn over

SETUP

CO 4 sts and work as follows:

- 1 - k1, yo, k2, yo, k1 [6 sts]
- 2 - k2, p2, k2
- 3 - k1, yo, k4, yo, k1 [8 sts]
- 4 - k2, p4, k2
- 5 - k1, yo, k6, yo, k1 [10 sts]
- 6 - k2, p6, k2
- 7 - k1, yo, k8, yo, k1 [12 sts]
- 8 - k2, p2, k4, p2, k2
- 9 - k1, yo, k3, p4, k3, yo, k1 [14 sts]
- 10 - k2, p10, k2
- 11 - k1, yo, k2, k2tog, yo, k4, yo, ssk, k2, yo, k1 [16 sts]
- 12 - k2, p12, k2
- 13 - k1, yo, k2, k2tog, yo, k6, yo, ssk, k2, yo, k1 [18 sts]
- 14 - k2, p14, k2
- 15 - k1, yo, p1, k2tog, yo, k3, p4, k3, yo, ssk, p1, yo, k1 [20 sts]
- 16 - k2, pm, k1, p14, k1, pm, k2

Proceed to body.

BODY (WRITTEN)

- 1 - k1, yo, k to marker, sm, p1, k3, k2tog, yo, k4, yo, ssk, k3, p1, sm, k to last stitch, yo, k1 [+2 sts]
- 2 - k to m, sm, k1, p14, k1, sm, k to end
- 3 - k1, yo, k to marker, sm, p1, k2, k2tog, yo, k6, yo, ssk, k2, p1, sm, k to last stitch, yo, k1 [+2 sts]
- 4 - as row 2

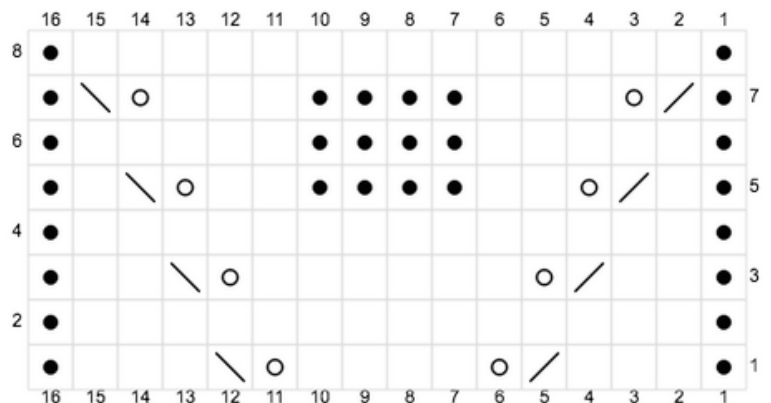
- 5 - k1, yo, k to m, sm, p1, k1, k2tog, yo, k2, p2, k2, yo, ssk, k1, p1, sm, k to last st, yo, k1 [+2 sts]
- 6 - k to m, sm, k1, p5, k4, p5, k1, sm, k to end
- 7 - k1, yo, k to m, sm, p1, k2tog, yo, k3, p4, k3, yo, ssk, p1, sm, k to last st, yo, k1 [+2 sts]
- 8 - as row 2

Repeat these 8 rows until shawl measures 30" x 60".

BODY (CHART)

Odd rows: k1, yo, k to m, work the chart, k to last st, yo, k1.

Even rows: k to m, work the chart, k to end



FINISHING

Bind off. Weave in ends.
Block lightly if desired.

Additional Resources

[Add to Your Ravelry Queue](#)
[Contact the Designer](#)

[Join Our Facebook Group](#)

Find Us on Social Media

[Facebook](#) | [Instagram](#) | [Pinterest](#) | [Ravelry](#) | [Twitter](#) | [YouTube](#)