

With a reversible design, this spacious and sturdy tote offers twice the design options! The double-knit construction enables the bag to carry heavier items without stretch.



Materials

- Yarn** 2 skeins of Loops & Threads Impeccable Yarn in [Aran](#) (Color A)
1 skein each of Loops & Threads Impeccable Yarn in [Blue Haze](#) (Color B), [Clear Blue](#) (Color C), [Brite Sky Blue](#) (Color D), [Cherry](#) (Color E), [Pumpkin](#) (Color F), [Gold](#) (Color G), and [Butterscotch](#) (Color H)
or
350 yards of medium weight yarn in main color
70 yards each of medium weight yarn in 7 additional colors
- Notions** [finishing needle](#)
[stitch markers](#) (optional)
- Gauge** 16 sts x 24 rows = 4" x 4" in Stockinette stitch (double knit)
Matching gauge is not essential for this project.
- Needles** [US #6/4.00 mm](#) (24" circular, plus [DPN](#) for the strap, if desired)

Finished Size

12" x 12" bag body
22" strap drop

Abbreviations

BO - bind off
CO - cast on
DK - double knit
k - knit
p - purl
st(s) - stitch(es)

Pattern Notes

This pattern requires familiarity with double knitting in two colors, reading color charts, and seaming.

This bag is made of four double-knit pieces. Two reversible body panels charts are provided and one of each is used for the bag, though you can customize the tote by knitting two panels from the same chart.

Sunrise/Sunset is a simple striped pattern, perfect for double-knitting beginners. Summer Sun features a repeating sun motif and requires several color changes mid-row.

Body Setup

Make 2. Select Sunrise/Sunset, Summer Sun, or one of each. The setup is the same for both charts.

CO 96 sts with Color A. Set up for double knitting by working one row across: *k1, p1*

Work two rows (across the panel and back to your starting point) in Stockinette stitch to complete a single DK row.

Begin Sunrise/Sunset or Summer Sun with Colors A and B.

Sunrise/Sunset

This simple striped pattern alternates colors as it progresses. Each stitch in the chart represents the color for the entire row. Use these colors for the assigned rows.

Rows 1 to 10 - Color A and Color B
 Rows 11 to 20 - Color B and Color C
 Rows 21 to 30 - Color C and Color D
 Rows 31 to 40 - Color D and Color E
 Rows 41 to 50 - Color E and Color F
 Rows 51 to 60 - Color F and Color G
 Rows 61 to 70 - Color G and Color H

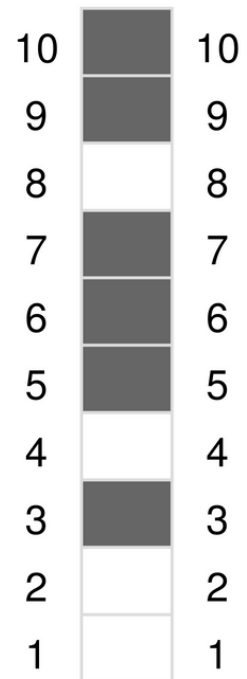
After 10 rows, the secondary color (represented by dark squares) will become the primary color (represented by light squares) and a new secondary color will be added.

For example, the first time you knit this progression, Color A is represented by light squares and Color B is represented by dark squares. The second time you work these 10 rows, Color B is represented by the light squares and Color C is represented by the dark squares.

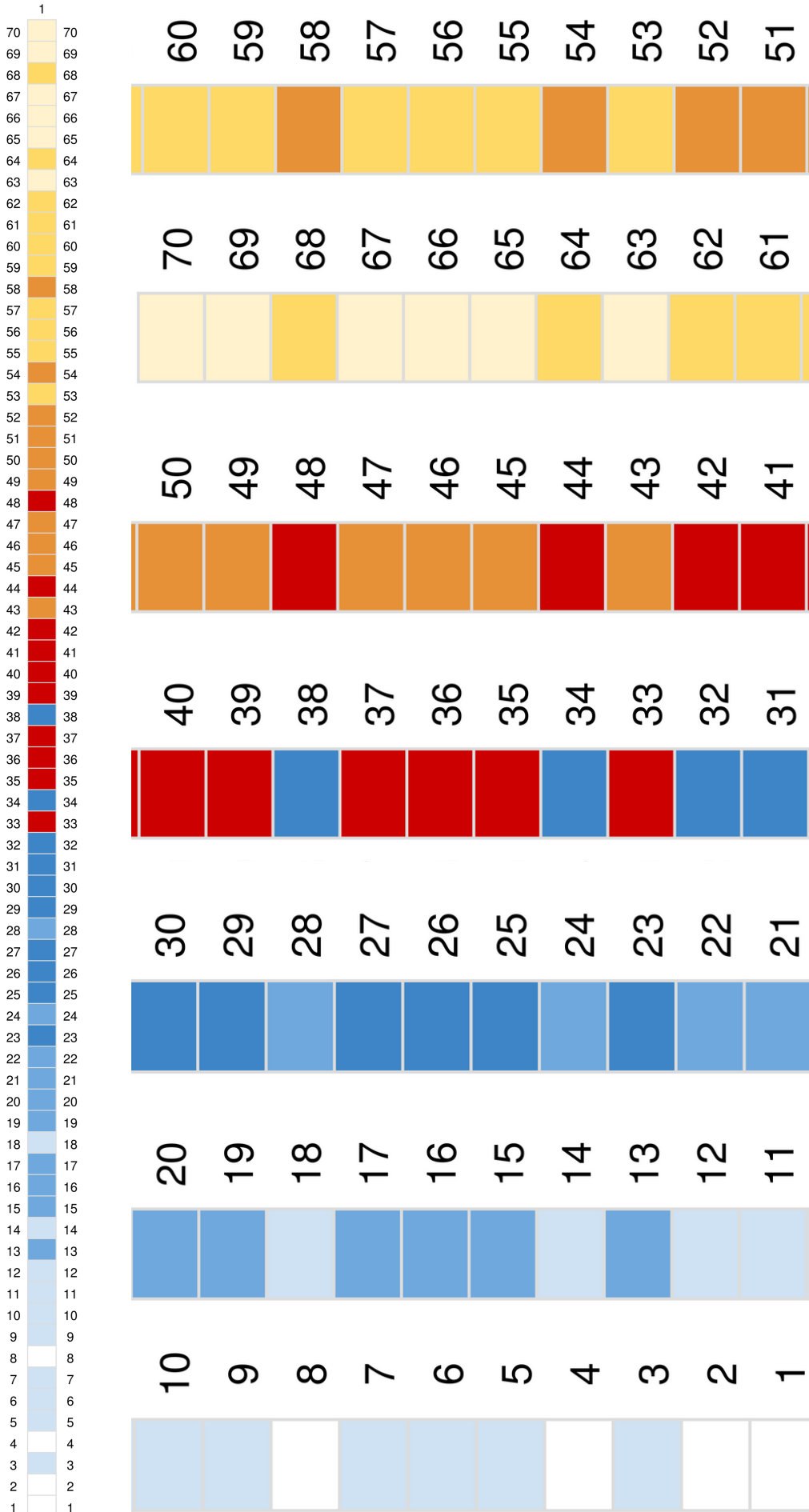
Continue changing colors every 10 rows, ending at Row 70.

With Color H, work across the panel and back in DK Stockinette stitch, completing a single DK row.

BO all sts.



ENDLESS SUMMER



Summer Sun

The Summer Sun chart spans 12 stitches over 10 rows. It is repeated 4 times across the body and color changes occur after every 10 rows.

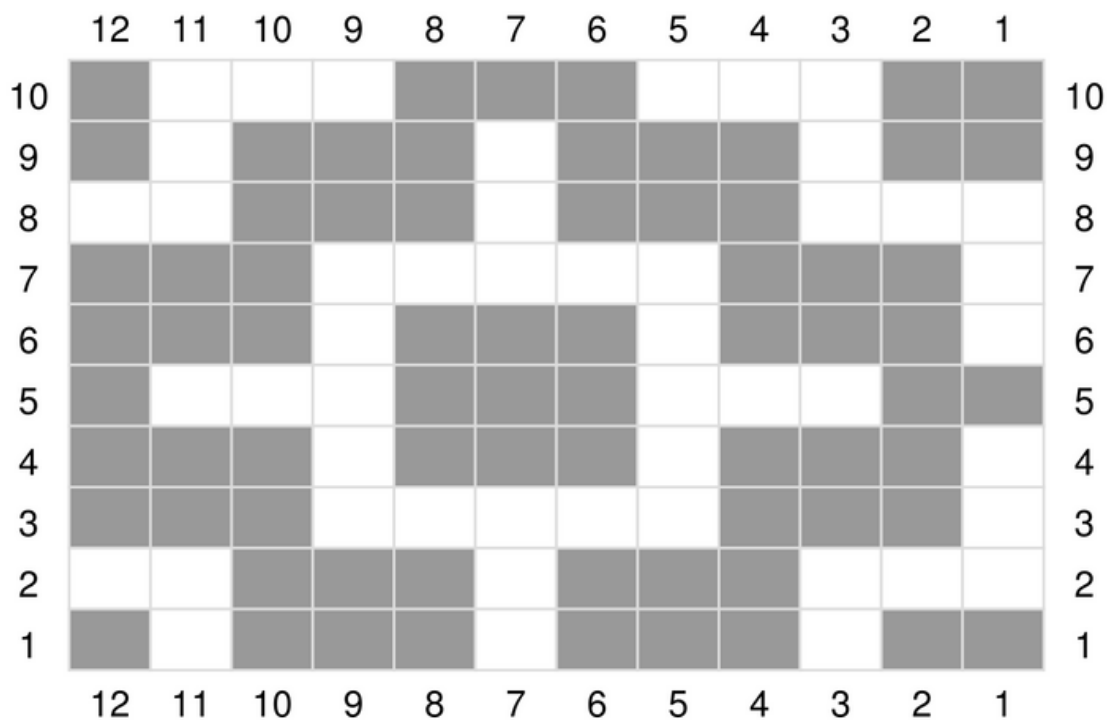
Color A is used in each repeat and is always represented by the light color. Every 10 rows, change the contrast color as follows:

Rows 1 to 10 - Color B
 Rows 11 to 20 - Color C
 Rows 21 to 30 - Color D
 Rows 31 to 40 - Color E
 Rows 41 to 50 - Color F
 Rows 51 to 60 - Color G
 Rows 61 to 70 - Color H

Continue changing colors every 10 rows, ending at Row 70.

With Color A, work across the panel and back in DK Stockinette stitch, completing a single DK row.

BO all sts.



Bottom

CO 20 sts with Color A. Set up for double knitting one row across: *k1, p1*

Work in DK Stockinette stitch until work measures 12" long, about 72 rows.

BO all sts.

Strap

CO 20 sts with Color A. Set up for double knitting one row across: *k1, p1*

Work in DK Stockinette stitch until work measures 12" long, about 290 rows.

If customizing strap length, be sure to include 24" for the sides of the bag (12" each).

BO all sts.

Finishing

Block lightly before seaming, if desired.

Sew the bottom of the bag to the side panels first. Arrange pieces for assembly and pin in place. Work from the center out to ensure even stitching.

Next, sew the strap to the sides of the tote, taking care not to twist the strap as you work.

Weave in ends.



Additional Resources

[Add to Your Ravelry Queue](#)
[Contact the Designer](#)

[Join Our Facebook Group](#)

Find Us on Social Media

[Facebook](#) | [Instagram](#) | [Pinterest](#) | [Ravelry](#) | [Twitter](#) | [YouTube](#)