

DAHLIA HAT

A Paper Dolls Cap Knitting Pattern by Holly Beemer

at yarn's length



This pattern features stranded colorwork figures circling the cap, holding hands like a string of paper dolls.

SIZING

Child - 21" circumference, 7.5" crown
Adult - 25" circumference, 9.5" crown

MATERIALS

YARN

80 (100) yards of [Red Heart Heat Wave in Beach Ball](#) (MC)

80 (100) yards of [Red Heart Heat Wave in Blue Skies](#) (CC)

NEEDLES

US #8/5.00 mm dpn

NOTIONS

finishing needle
stitch markers

GAUGE

18 sts x 24 rows = 4" x 4"
in Stockinette stitch

ABBREVIATIONS

BO - bind off
CC - contrast color
CO - cast on
k - knit
k2tog - knit 2 stitches together; single right-leaning decrease
MC - main color
p - purl
PM - place marker
ssk - slip 2 stitches knitwise, knit these 2 stitches together through the back loops; single left-leaning decrease
st(s) - stitch(es)

PATTERN

This cap is worked in the round from the brim up. Instructions are provided for child (adult) sizing and include written instructions and a chart.

SETUP & BRIM

CO 96 (116) sts with MC. PM and join in the round, taking care not to twist.
Work in k2, p2 ribbing for 8 (10) rounds.

On the next round:

Child - k2tog, k to end of round [95 sts], PM every 19 sts

Adult - *k2tog, k56* twice [114 sts], PM every 19 sts



BODY

MC is represented with underlined text. See chart (page 4) for reference.

Round 1 - *k5, k9, k5*

Round 2 - *k3, k11, k3*

Round 3 - *k1, k13, k1*

Round 4 - *k4, k4, k3, k4, k4*

Round 5 - *k2, k6, k3, k6, k2*

Round 6 - *k1, k7, k3, k7, k1*

Rounds 7 to 10 - *k1, k1, k15, k1, k1*

Rounds 11 to 12 - *k1, k2, k13, k2, k1*

Child:

Skip rounds 13 to 15.

Rounds 16 to 21 - *k1, k3, k11, k3, k1*

Adult:

Rounds 13 to 21 - *k1, k3, k11, k3, k1*

Round 22 - *k1, k4, k9, k4, k1*

Round 23 - *k2, k3, k9, k3, k2*

Round 24 - *k3, k3, k7, k3, k3*

Round 25 - *k4, k3, k5, k3, k4*

Round 26 - *k1, k17, k1*

Round 27 - *k2, k15, k2*

Begin crown shaping.

Round 28 - *k4, k1, ssk, k5, k2tog, k1, k4* [85 (102) sts]

Round 29 - *k3, k11, k3*

Round 30 - *k1, k1, k2tog, k1, k1, k5, k1, k1, ssk, k1, k1*

[75 (90) sts]

Round 31 - *k3, k3, k3, k3, k3*

Round 32 - *k1, k2tog, k2, k5, k2, ssk, k1* [65 (78) sts]

Round 33 - *k1, k3, k5, k3, k1*

Round 34 - *k1, k1, ssk, k5, k2tog, k1, k1* [55 (66) sts]

Round 35 - *k4, k3, k4*

Round 36 - *k2, ssk, k3, k2tog, k2* [45 (54) sts]

Round 37 - *k2, k5, k2*

Round 38 - *k2, ssk, k1, k2tog, k2* [35 (42) sts]

All work is done in MC after row 38.

Round 39 - k all

Round 40 - *k1, ssk, k1, k2tog, k1 [25 (30) sts]

Round 41 - k all

Round 42 - *ssk, k1, k2tog* [15 (28) sts]

Round 43 - k all

BODY (CONT.)

Child:

Round 44 - *k1, k2tog* around [10 sts]

Round 45 - *k2tog* around [5 sts]

Adult:

Round 44 - *k2tog* around [14 sts]

Round 45 - *k2tog* around [7 sts]

BO, draw tail through remaining sts, and secure.

If desired, create pompom and attach to crown.

Weave in ends. Block if desired.



This version of this cap is knit with the brim in a contrasting color.

Additional Resources

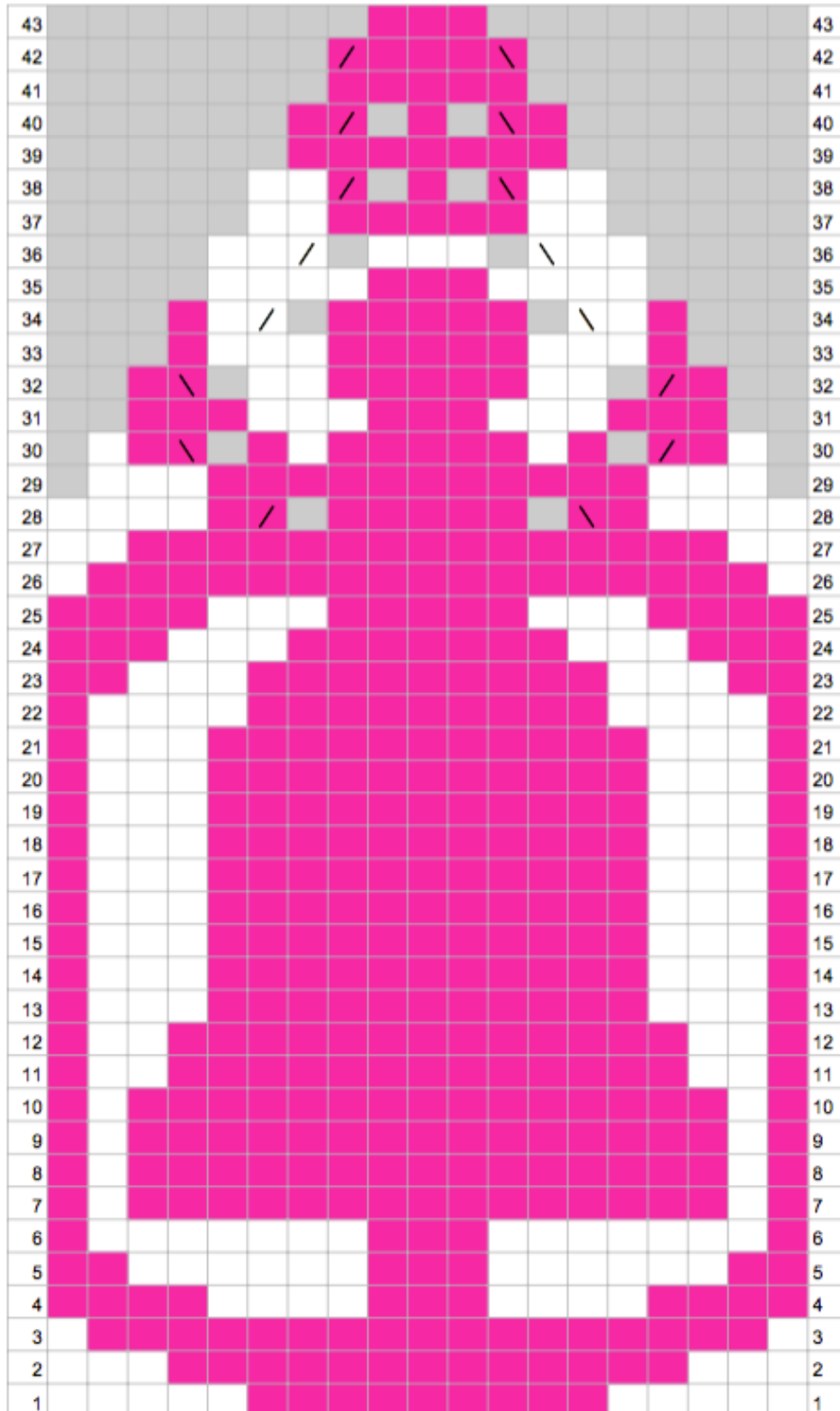
[Add to Your Ravelry Queue](#)
[Contact the Designer](#)

[Join Our Facebook Group](#)

Find Us on Social Media

[Facebook](#) | [Instagram](#) | [Pinterest](#) | [Ravelry](#) | [Twitter](#) | [YouTube](#)

DAHLIA



MC (main color)
 CC (contrast color)
 no stitch



ssk (slip, slip, knit)
 k2tog (knit 2 together)